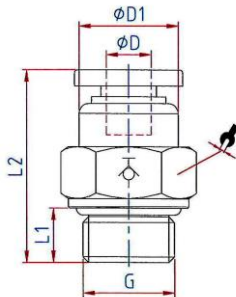
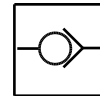


The air supply is completely shut off as soon as the hose is disconnected from the union.
The flow rate is only guaranteed if the hose is securely inserted.

Material:	Plastic and nickel-plated brass
Sleeve:	Plastic blue
Working pressure:	0 - 10 bar
Temperature range:	0 °C to 60 °C
Sealing surface:	O-ring (NBR)
Port:	M thread acc. to DIN 13-1, with O-ring G thread acc. to DIN EN ISO 228-1, with O-ring R thread acc. to ISO 7-1, PTFE coated
Medium:	Compressed air*
Sealant:	NBR
Applications:	Compressed air systems
Recommended hose:	PU or PA (nylon)

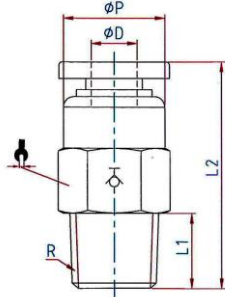


195.148

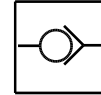


Straight stop valve, parallel male thread with O-ring (NBR)

Art. No.	Type No.	Ø D	G	Ø D1	L1	L2	a/f	Standard thread
110160	195.184	4	G 1/8	10.0	5.5	27.5	14	DIN EN ISO 228-1
110160 = discontinued product. No longer available. New product 151439 (195.184-2)								
110161	195.186	6	G 1/8	12.0	5.5	27.0	14	DIN EN ISO 228-1
110161 = discontinued product. No longer available. New product 151440 (195.186-2)								
110162	195.188	8	G 1/8	14.0	5.5	29.0	14	DIN EN ISO 228-1
110162 = discontinued product. No longer available. New product 151441 (195.188-2)								
110163	195.146	6	G 1/4	12.0	7.5	27.0	17	DIN EN ISO 228-1
110164	195.148	8	G 1/4	14.0	7.5	29.0	17	DIN EN ISO 228-1
110164 = discontinued product. No longer available. New product 151340 (195.148-1)								
110165	195.1410	10	G 1/4	17.0	7.5	37.0	17	DIN EN ISO 228-1
110165 = discontinued product. No longer available. New product 151341 (195.1410-1)								
110166	195.388	8	G 3/8	14.0	7.5	29.0	20	DIN EN ISO 228-1
110166 = discontinued product. No longer available. New product 151342 (195.388-1)								
110167	195.3810	10	G 3/8	17.0	7.5	37.0	20	DIN EN ISO 228-1
110167 = discontinued product. No longer available. New product 151446 (195.3810-2)								
110168	195.3812	12	G 3/8	20.0	7.5	38.0	21	DIN EN ISO 228-1
110168 = discontinued product. No longer available. New product 151447 (195.3812-2)								
110169	195.1210	10	G 1/2	17.0	10.0	37.0	24	DIN EN ISO 228-1
110169 = discontinued product. No longer available. New product 151448 (195.1210-2)								
110170	195.1212	12	G 1/2	20.0	10.0	38.0	24	DIN EN ISO 228-1

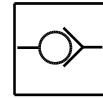
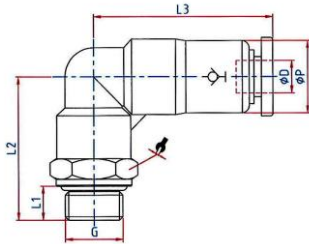


196.148



Straight stop valve, conical male thread, PTFE coated

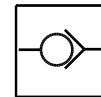
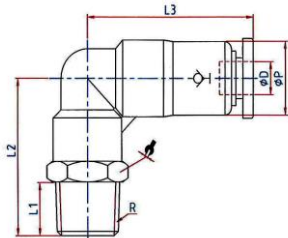
Art. No.	Type No.	Ø D	R	L1	L2	Ø P	a/f	Standard thread
110171	196.184	4	R 1/8	7.5	27.5	10.0	10	ISO 7-1
110171 = discontinued product. No longer available. New product 151343 (196.184-1)								
110172	196.186	6	R 1/8	7.5	27.0	12.0	12	ISO 7-1
110172 = discontinued product. No longer available. New product 151451 (196.186-2)								
110173	196.188	8	R 1/8	7.5	29.0	14.0	14	ISO 7-1
110173 = discontinued product. No longer available. New product 151452 (196.186-2)								
110174	196.146	6	R 1/4	9.5	27.0	12.0	14	ISO 7-1
110174 = discontinued product. No longer available. New product 151453 (196.146-2)								
110175	196.148	8	R 1/4	9.5	29.0	14.0	14	ISO 7-1
110175 = discontinued product. No longer available. New product 151454 (196.148-2)								
110176	196.1410	10	R 1/4	9.5	37.0	17.0	17	ISO 7-1
110176 = discontinued product. No longer available. New product 151455 (196.1410-2)								
110177	196.388	8	R 3/8	10.5	29.0	14.0	17	ISO 7-1
110178	196.3810	10	R 3/8	10.5	37.0	17.0	17	ISO 7-1
110178 = discontinued product. No longer available. New product 151457 (196.3810-2)								
110179	196.3812	12	R 3/8	10.5	38.0	20.0	20	ISO 7-1
110179 = discontinued product. No longer available. New product 151458 (196.3812-2)								
110180	196.1210	10	R 1/2	13.5	37.0	17.0	21	ISO 7-1
110181	196.1212	12	R 1/2	13.5	38.0	20.0	21	ISO 7-1



197.56

Angle stop valve, swivel type, parallel male thread with O-ring (NBR)

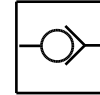
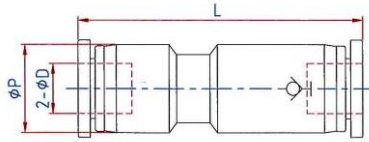
Art. No.	Type No.	Ø D	G	L1	L2	L3	Ø P	a/f	Standard thread
110182	197.54	4	M5	3.5	21.3	31.0	13.0	10	DIN 13-1
110182 = discontinued product. No longer available. New product 151344 (197.54-1)									
110183	197.56	6	M5	3.5	21.7	29.4	13.0	12	DIN 13-1
110183 = discontinued product. No longer available. New product 151462 (197.56-2)									
110184	197.184	4	G 1/8	5.5	24.3	31.0	13.0	14	DIN EN ISO 228-1
110185	197.186	6	G 1/8	5.5	24.2	29.4	13.0	14	DIN EN ISO 228-1
110185 = discontinued product. No longer available. New product 151345 (197.186-1)									
110186	197.188	8	G 1/8	5.5	27.0	33.0	14.5	14	DIN EN ISO 228-1
110187	197.146	6	G 1/4	7.5	26.7	29.4	13.0	17	DIN EN ISO 228-1
110187 = discontinued product. No longer available. New product 151346 (197.146-1)									
110188	197.148	8	G 1/4	7.5	29.5	33.0	14.5	17	DIN EN ISO 228-1
110189	197.1410	10	G 1/4	7.5	34.3	42.5	18.0	17	DIN EN ISO 228-1
110190	197.388	8	G 3/8	7.5	30.0	33.0	14.5	20	DIN EN ISO 228-1
110190 = discontinued product. No longer available. New product 151469 (197.388-2)									
110191	197.3810	10	G 3/8	7.5	34.3	42.5	18.0	20	DIN EN ISO 228-1
110192	197.3812	12	G 3/8	7.5	36.0	46.5	21.0	21	DIN EN ISO 228-1
110193	197.1210	10	G 1/2	10.0	37.8	42.5	18.0	24	DIN EN ISO 228-1
110194	197.1212	12	G 1/2	10.0	39.0	46.5	21.0	24	DIN EN ISO 228-1



198.146

Angle stop valve, swivel type, conical male thread, PTFE coated

Art. No.	Type No.	Ø D	R	L1	L2	L3	Ø P	a/f	Standard thread
110195	198.184	4	R 1/8	7.5	23.8	31.0	13.0	10	ISO 7-1
110195 = discontinued product. No longer available. New product 151347 (198.184-1)									
110196	198.186	6	R 1/8	7.5	24.2	29.4	13.0	12	ISO 7-1
110196 = discontinued product. No longer available. New product 151348 (198.186-1)									
110197	198.188	8	R 1/8	7.5	27.5	33.0	14.5	14	ISO 7-1
110197 = discontinued product. No longer available. New product 151349 (198.188)									
110198	198.146	6	R 1/4	9.5	26.7	29.4	13.0	14	ISO 7-1
110198 = discontinued product. No longer available. New product 151477 (198.146-2)									
110199	198.148	8	R 1/4	9.5	29.5	33.0	14.5	14	ISO 7-1
110199 = discontinued product. No longer available. New product 151478 (198.148-2)									
110200	198.1410	10	R 1/4	9.5	34.3	42.5	18.0	17	ISO 7-1
110201	198.388	8	R 3/8	10.5	31.0	33.0	14.5	17	ISO 7-1
110202	198.3810	10	R 3/8	10.5	35.3	42.5	18.0	17	ISO 7-1
110203	198.3812	12	R 3/8	10.5	37.0	46.5	21.0	21	ISO 7-1
110204	198.1210	10	R 1/2	13.5	38.8	42.5	18.0	21	ISO 7-1
110205	198.1212	12	R 1/2	13.5	40.0	46.5	21.0	21	ISO 7-1



199.06

Stop union

Art. No.	Type No.	Ø D	Ø P	L
110206	199.04	4	13.0	47.0
110207	199.06	6	13.0	45.0
110207 = discontinued product. No longer available. New product 151350 (199.06-1)				
110208	199.08	8	15.0	49.5
110208 = discontinued product. No longer available. New product 151487 (199.08-2)				
110209	199.10	10	19.0	63.0
110209 = discontinued product. No longer available. New product 151488 (199.10-2)				
110210	199.12	12	21.5	66.5
110210 = discontinued product. No longer available. New product 151489 (199.12-2)				

* The suitability test for the use with alternative specifications is the user's responsibility.